

PART OF SE 1/4, SEC. 32, & SW 1/4, SEC. 33, T.7N., R.2W., S.L.B. & M.

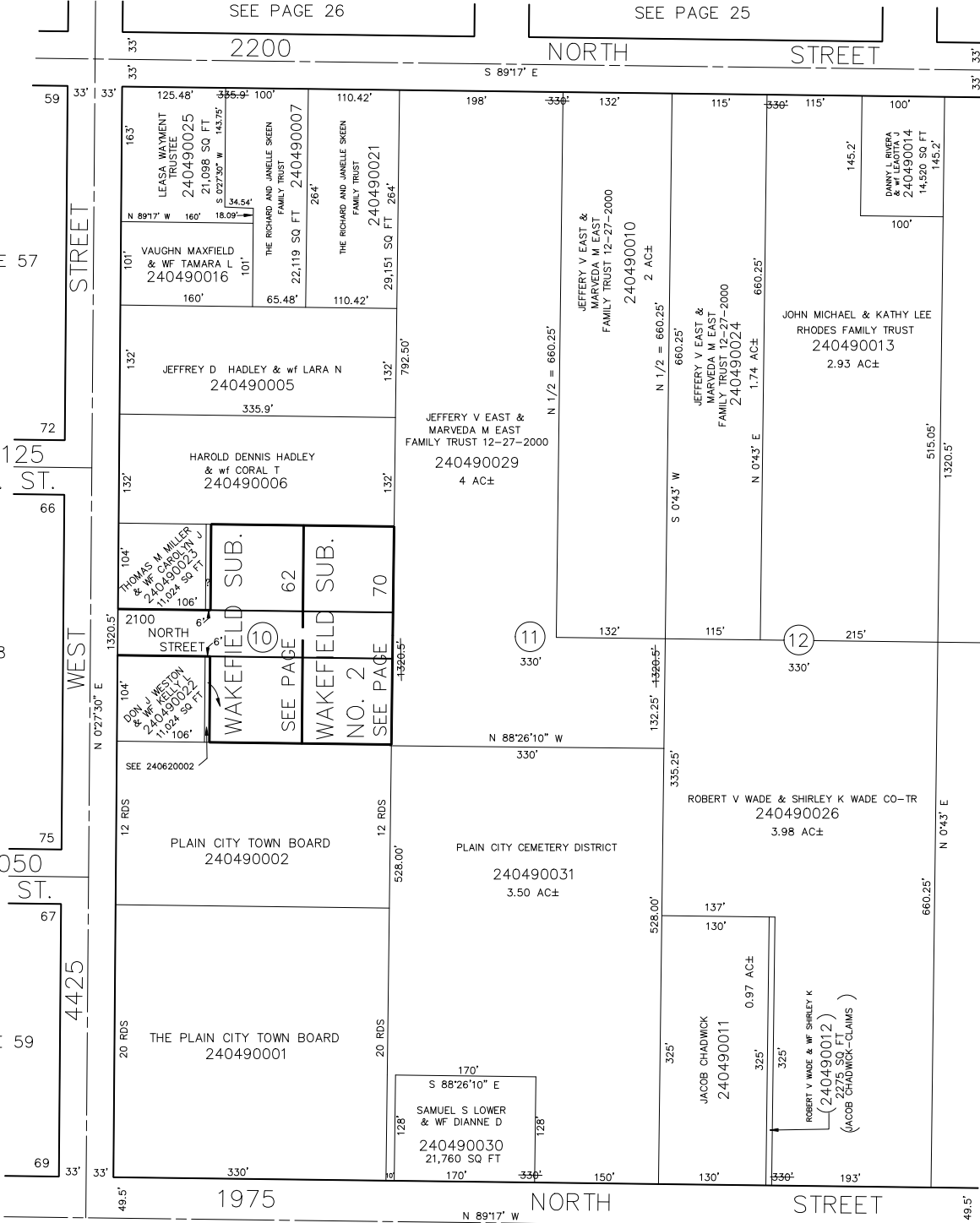
PLAIN CITY
LOTS 10 TO 12, PLAT B

TAXING UNIT: 21

SCALE 1" = 100'

SEE PAGE 26

SEE PAGE 25



LOT 13
SEE PAGE 47